

Light**FEEL**



www.lightfeel.net

SL-TL228



Introduction

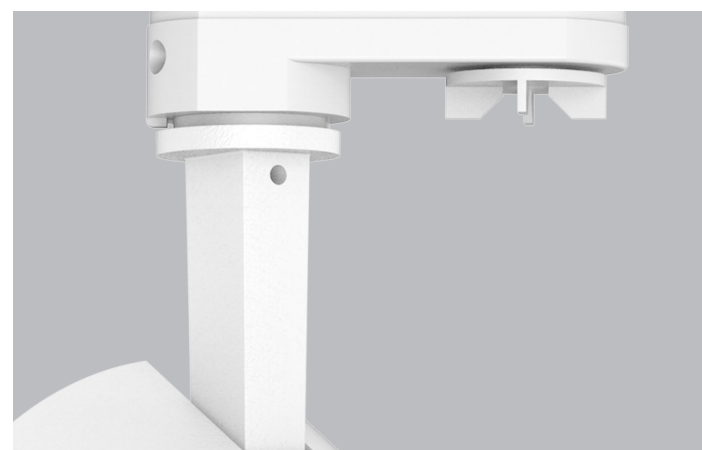
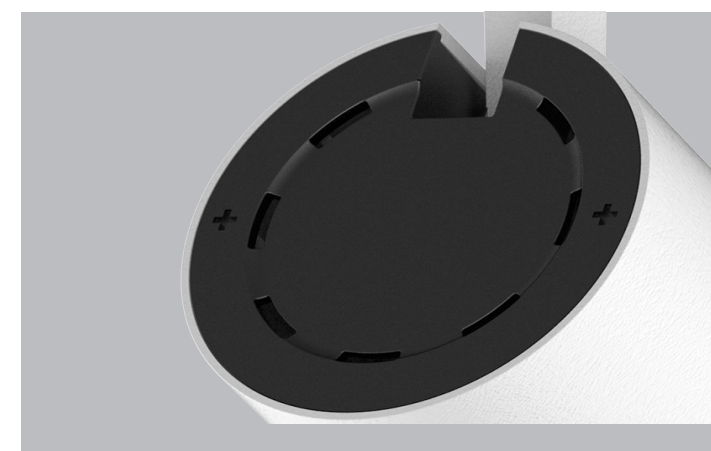
This track light is an anti-glare design. High lumen COB chip and PMMA lens offer a uniform lighting output. AL6063 aluminum lamp body provides excellent heat dissipation. Special lens design reaches anti-glare effect and creates a comfortable visual experience. Multiple beam angle lens optional, modular lens design make a convenient maintenance. Easy installation, recreational for various application.

Features

- Anti-glare design
- CRI80/90/97 available
- Modular lens design: 30°/45°for 10W, 36°/60°for 20W and above
- SDCM<6
- Flicker free internal driver

Application Areas

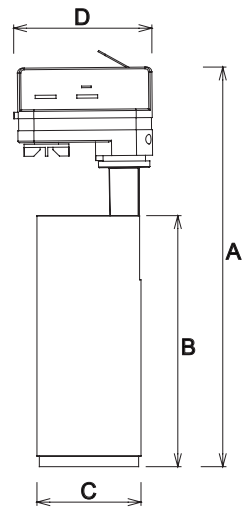
Applicable for residential lighting in bedroom, living room, corridor etc, also suitable for commercial lighting in office, hotel, restaurant etc.





Technical Data Sheet

Model No.			TL228-10W	TL228-20W	TL228-25W	TL228-30W	TL228-40W
Dimension(mm)			Ø65*249mm	Ø85*269mm	Ø85*269mm	Ø100*302mm	Ø100*302mm
Cutout (mm)			-				
Watt(W)			10W	20W	25W	30W	40W
Rated Input Voltage(V)			AC230V				
Input Voltage(V)			AC200V—240V				
LED Module Input			-				
Light Source			COB				
SDCM			<6				
CCT(K)			1-CCT: 2700K/3000K/4000K/5000K				
CCT Selection DIP Switch			NO				
Luminous Flux (lm) ±5%	Non-DIM	1-CCT	780~1100Lm	1850~2250Lm	2150~2700Lm	2650-3050Lm	3550-4200Lm
	DIM		-				
	Non-DIM	3-CCT	-				
	DIM		-				
CRI			80(90/97 optional)				
Beam Angle (°)			30°/45°	36°/60°			
UGR			-				
LED Driver			Built-in				
Dimming Option			-				
Sensor			-				
Emergency Kits			-				
Electrical Class			Class I				
Ingress Protection (IP Rating)			IP20				
Impact Resistance (IK Rating)			-				
Product Finishing(Base)			White RAL 9016/Black RAL9005				
Materials of Optics			PMMA				
Materials of Housing			PC/Aluminium				
Lifetime (hr)			50000h				
Glow wire test (°C)			650°C				
Operating Temp. (°C)			-20°C ~45°C				
Storage Temp. (°C)			25°C				
Installation			Track				



IP20

CRI ≥80

PF 0.9

50000 HOURS

30°

36°

45°

60°

Measurement

Model	Dimension(mm)				Size(mm)	Product Weight (Kg)		Package weight (Kg)		Carton Size(cm)	Qty/CTN	20GP (pcs)	40HQ (pcs)
	A	B	C	D		N.W/PC	G.W/PC	N.W/CTN	G.W/CTN				
TL228-10W	249	157	Ø65	84	Ø65*249	0.5	0.6	6.0	8.0	42.5*30.0*38.5	12PCS	7488	14976
TL228-20W	269	178	Ø85	93	Ø85*269	0.76	0.86	9.2	11.2	34.5*56.5*42.5	12PCS	4020	9792
TL228-25W	269	178	Ø85	93	Ø85*269	0.76	0.86	9.2	11.2	34.5*56.5*42.5	12PCS	4020	9792
TL228-30W	302	211	Ø100	108	Ø100*302	1.1	1.2	13.2	15.2	34.5*56.5*42.5	12PCS	4020	9792
TL228-40W	302	211	Ø100	108	Ø100*302	1.1	1.2	13.2	15.2	34.5*56.5*42.5	12PCS	4020	9792

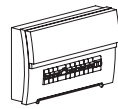
Driver Datasheet (Non-Dimmable)

Total load wattage		10W	20W	25W	30W	40W
Output	Output Voltage range	DC30-40V				
	Rated output current	230mA	500mA	600mA	750mA	1000mA
	Line Regulation	±5%				
	Setup, Rise Time	≤0.5S				
	Flickering Index	≤10%				
Input	Input Voltage	AC180-265V				
	Rated Input Voltage(V)	AC200-240V				
	Frequency	50/60Hz				
	Input Current	≤0.06A	0.12A	0.15A	0.18A	0.25A
	Rated Input Current	≤0.05A	0.11A	0.14A	0.17A	0.23A
	Power Factor	0.9				
	THD	<20% @230V				
	Efficiency	≥82%	≥86%	≥87%		
	No load wattage	<0.5W				
Protection	Short circuit protection	Pass				
	Over voltage protection	Pass				
	Over temperature protection	Pass				
Safety & EMC	Withstand voltage	-				
	Isolation Resistance	I/P-O/P: 500VDC, ≥100M Ω				
	Surge	IEC61000-4-5(L-N:1KV, L/N-PG:2KV)	IEC61000-4-5(L-N:0.5KV, L/N-PG:1KV)	IEC61000-4-5(L-N:1KV, L/N-PG:2KV)		
	EMC Emission	EN55015, EN61000-3-2				
	EMC Immunity	EN61000-4-2,3,4,5,6,8,11; EN61547				

Installation Procedure

WARNING ⚡

- 1.Switch off before installation / maintenance.
- 2.Switch on only after complete installation and examination of the circuit.
- 3.Professional electrician for installation and maintenance only.

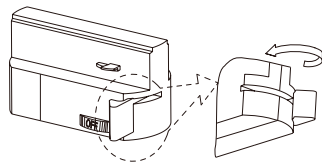


Turn Off power supply before starting any installation. Read instructions & check you have all the tools & accessories to complete the installation correctly.

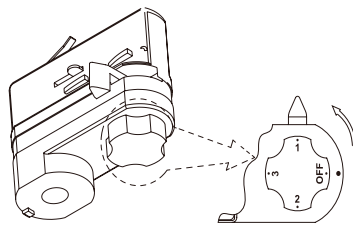
Surface Mounted Installation

Step 1

Prior to locating Adaptor into Track Section make sure it is set in the 'OFF' position & 'Locking Lever' is set in the position shown.



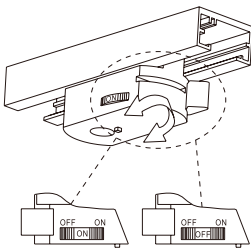
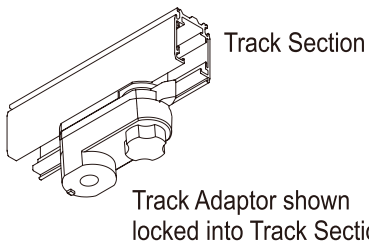
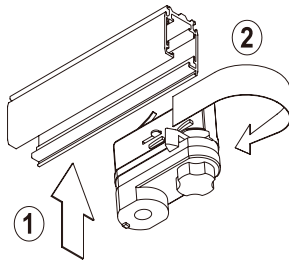
2-wires, 3-wires adaptor



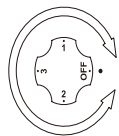
4-wires adaptor

Step 2

Locate Track Adaptor into Track Section (1) & lock into position by turning 'Locking Lever' 90°(2)



2-wires, 3-wires control luminaires in same circuit by ON/OFF switch.



4-wires Turn clockwise or anti-clockwise.